

**PUBLIC SERVICE COMPANY OF NEW MEXICO**

12<sup>TH</sup> REVISED SAMPLE FORM NO 73  
CANCELLING 11<sup>TH</sup> REVISED SAMPLE FORM NO 73

ELECTRIC COMMERCIAL BILL

Numerous Changes (X)

Electric Commercial Bill

x

**EFFECTIVE**

**March 31, 2025**

**Replaced by NMPRC**

**By: Operation of Law**

Amended Advice Notice No 624

/s/ Mark Fenton

Mark Fenton

Executive Director, Regulatory Policy & Case Management

GCG#532475



PNM.com  
 Make a payment 844-766-7968, 24/7  
 Customer service 888-342-5766, M-F 7 30AM-6PM

FORM NO.73

<b>Bill Issued Date</b>	<b>09/18/2022</b>
Amount of Your Last Bill	\$101 00
Payments Received	- \$101 00
Balance Before Current Bill	\$0 00
Current Electricity Charges	\$273 41



### Your Account



**Account number** 000000000 - 0000000 - 9  
**Service address:** Nonresidential Customer  
 123 Service Address  
 Albuquerque, NM 87000-0000



**Total Amount Due** \$273.41

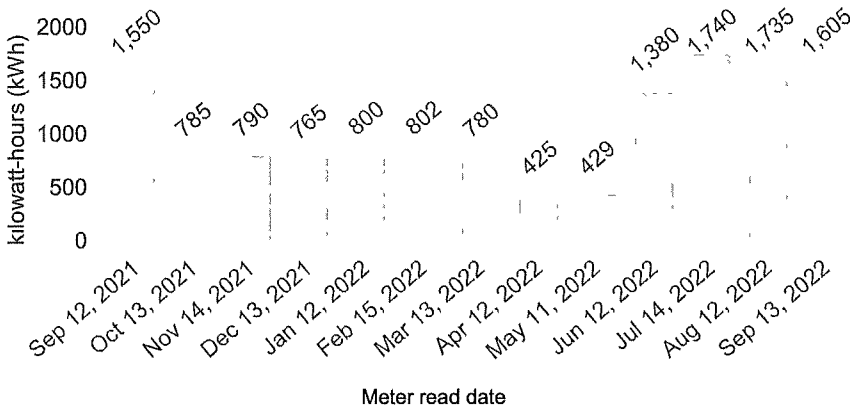


**Due by** Oct 18, 2022



### Energy Use History

Find out more about meter readings at [PNM.com/example](http://PNM.com/example)



- Current bill
- Previous bill
- Estimated use



### Energy Use Snapshot

This bill Aug 13 - Sep 12 (30 days)

Usage This Bill

## 1,605 kWh

Avg daily use 53.50 kWh  
 Avg. daily cost \$9.11  
 Avg daily temp 81°

Usage Last Year's Bill

1,550 kWh  
 1,735 kWh

Avg daily temp 81°



414 Silver Ave SW  
 Albuquerque, NM 87102

Your donation to the PNM Good Neighbor Fund (GNF) provides assistance to those in need. PNM shareholders match your donation.

<b>Total Amount Due</b>	<b>\$273.41</b>
<b>Due by</b>	<b>10/18/2022</b>

GNF Donation \$ \_\_\_\_\_  
 Total enclosed \$ \_\_\_\_\_

Nonresidential Customer  
 123 Mailing Address  
 Albuquerque, NM 87000-0000



PNM  
 PO Box 27900  
 Albuquerque, NM 87125-7900





## Message Center

Placeholder – Message Varies



## Billing Details

### Breakdown of Current Charges of \$273.41

Base Charges  
\$181.44Fuel Cost  
Adjustment  
\$41.91Riders  
\$22.81  
Taxes  
\$19.96

Small Power Rate 2A	Use (kWh)	\$ per kWh	Percentage	Amount
<b>Base Charges</b>				
Customer Charge				\$15.77
<b>Use type</b>				
<i>Non-Summer</i>				
Electricity You Used	90.000	x \$0.0779432		\$7.01
<b>Fuel Cost Adjustment</b>				
Non-Renewable 79.7% of kWh	330.755	x \$0.0350096		\$11.58
Renewable 20.3% of kWh	84.245	x \$0.0000000		\$0.00
<b>Riders</b>				
Renewable Energy Rider	1,605.000	x \$0.0084816		\$13.85
Cost-Effective Energy Saving Prog			3.799%	\$8.96
<b>Taxes</b>				
City/County Franchise Fee			3.000%	\$0.00
State			5.125%	\$12.99
County			1.1875%	\$3.01
City			1.5625%	\$3.96
<b>Current Electricity Charges</b>				<b>\$273.41</b>

Meter Reading Details	
Meter number	0000000
Read date	M/D/Y (XX days billed)
Meter read type	Estimated
Current read	30441
Previous read	- 28836
Meter constant	x 1.000
<b>Total kWh</b>	<b>1,605.000</b>



(Example) In 2021, 20% of the energy PNM supplied was generated by renewable resources, like solar and wind

### Ways to Pay Your PNM Bill

**Free Paperless Bill** Save paper & reduce clutter. Sign up at [PNM.com/paperless](http://PNM.com/paperless). Then you can choose how you would like to pay.**Free Online Click-to-Pay** Pay from your checking, savings or money market account. Sign up at [PNM.com/pay](http://PNM.com/pay).**Free Automatic Payment** Recurring payments from your checking or savings account. Sign up for Automatic Payment at [PNM.com/pay](http://PNM.com/pay).**Online Banking** Pay your PNM bill online at your bank's website. Visit your bank website for more information.**Pay in person:** Visit dozens of participating Western Union offices. \$1.00 fee applies. See [PNM.com/wu](http://PNM.com/wu) for current locations.**Pay by Credit, Debit Card or Electronic Check** Make one-time payments with Visa, MasterCard & Discover online at [PNM.com/pay](http://PNM.com/pay) or by calling 844-766-7968. A \$2.00 processing fee applies. PNM does not receive a portion of this fee.**Scan to pay.** Scan the QR code to make a one-time payment.

When you provide a check as payment, you authorize us either to use information from your check to make a one-time electronic fund transfer (EFT) from your account or to process the payment as a check. When we make an EFT, funds may be withdrawn from your account the same day we receive your payment, and your check will not be returned to you from your financial institution.

Visit [PNM.com/paybill](http://PNM.com/paybill) for more information on these and other bill options available to you.