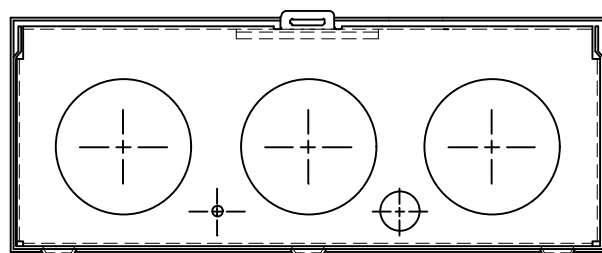
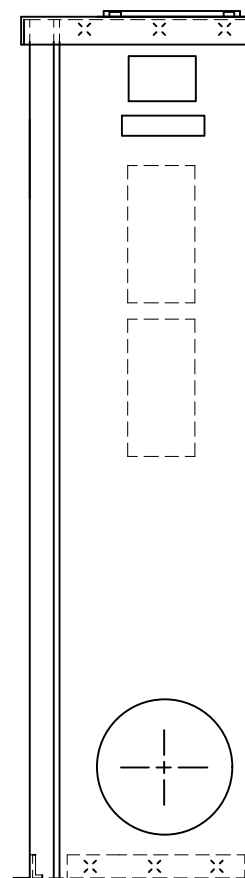
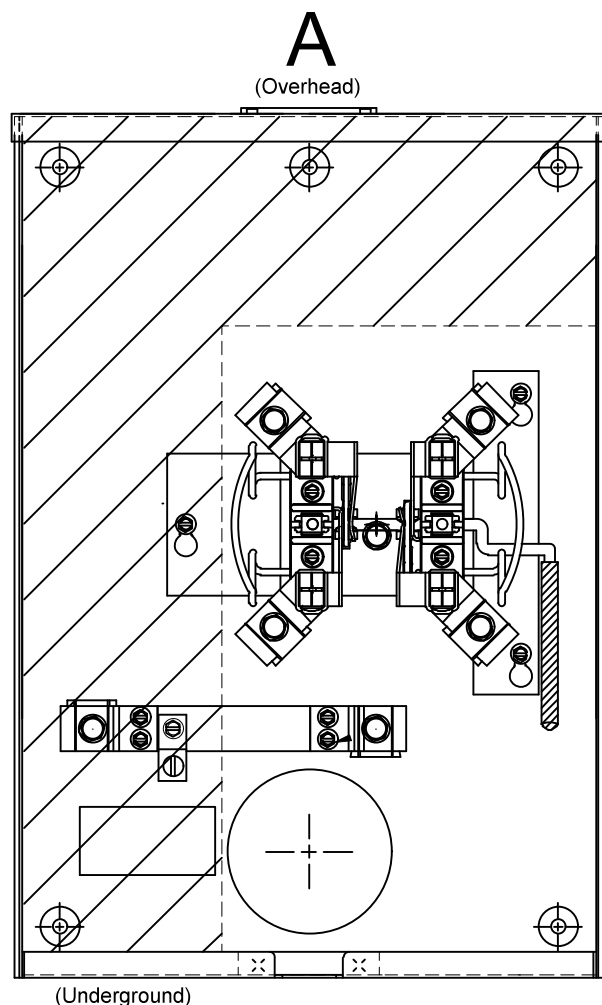


PNM
METER
STANDARD



NOTES

- (1) Socket to be Underwriters Laboratory (UL) listed.
- (2) Connections for terminating service conductors shall be the lay-in type.
- (3) Service conduit to enter at points "A"
- (4) No load conduits or load conductors in shaded area from front to back.
- (5) May be used on single-phase overhead services up to and including 200A or 200A underground service.
- (6) This socket is optional for residential use.
- (7) Commercial application for non-critical loads, i.e. sprinkler controls and gates. PNM will allow socket without bypass handle.
- (8) Meter shall be 4' - 5' 6" from finished grade.
- (9) PNM does not permit a trough ahead of meter socket.
- (10) Metering and instrument cabinets shall not be used to house Customer-owned equipment, such as distribution panels or other equipment, nor used as a junction box/trough for the distribution of circuits.
- (11) Customer building numbers must be permanently painted on proper meter panels.

REFERENCES

- (1) See DS-4-5.0 Underground Service Entrance System
- (2) See DM-4-11.0 Maximum Available Fault Current

SOCKET IS REQUIRED FOR
PERMANENT COMMERCIAL
INSTALLATIONS

Approved Equipment		
Manufacturer	Item	Mfg Part #
Eaton	200A OH Ringless Socket	UTE5203BCH
Eaton	200A OH Ringless Socket	UTE4203BCH
Eaton	200A OH/UG Ringless Socket	UTE4213CCH
Milbank	200A OH/UG 4T Bypass Socket	U3852-XL
Milbank	200A OH/UG 4T Bypass Socket	U9801-RXL
Milbank	200A OH/UG 4T Bypass Socket	U4801-XL-5T9
Midwest	200A OH/UG 5T Bypass Socket	UGTH4213CMEP
Siemens	200A OH/UG 4T Bypass Socket	40404-025
Square D	200A OH/UG 4T Bypass Socket	UTH7213T

For ease of checking service without interruption, PNM will no longer allow ring meter sockets as of 12/01/2013.

120/240V 200A Single-Phase Meter Socket with Bypass

MS-2-5.0