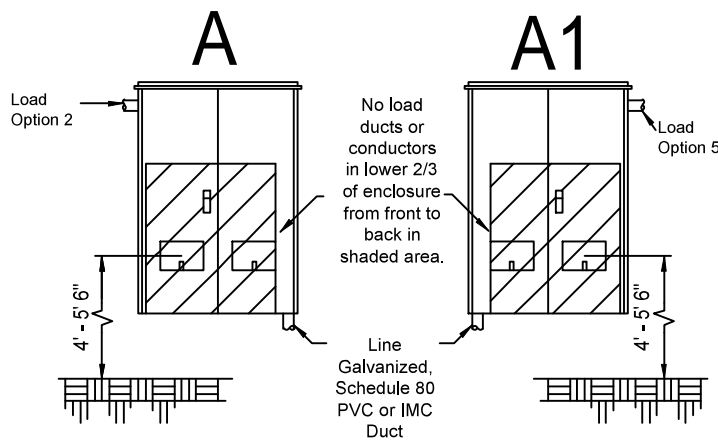


A

Underground Service



Important:

Socket shall be wired phase 1-2-3 from left to right and the conductors marked as such. Each conductor phase will be identified at the weather head or padmount, and at the meter base using band-wraps of electrical tape:

- One band for phase one
- Two bands for phase two
- Three bands for phase three
- White tape is suitable for neutral conductors only

NOTES

- (1) MS-3-2.0 Double-Window Three-Phase Instrument Transformer and Meter Enclosure
- (2) Must be used when main switch is larger than 200A.
- (3) Use only one of the options.
- (4) Must have 3/4" plywood backing inside enclosure.
- (5) If ducts or conductors cannot be kept out of shaded area due to parallel or large conductors. Drawings B must be used.
- (6) Maximum of 2 runs of 500 kcmil cable in a maximum of 2 ducts.
- (7) Line and load options shall be on different quarter section.
- (8) 1-2-3 to be identified in RED, Neutral in WHITE. For Delta services the third (wild) leg in ORANGE.
Leave wire rolled up in CT can and ensure the wire is long enough to reach Main Disconnect Panel (MDP)

B

Underground Service

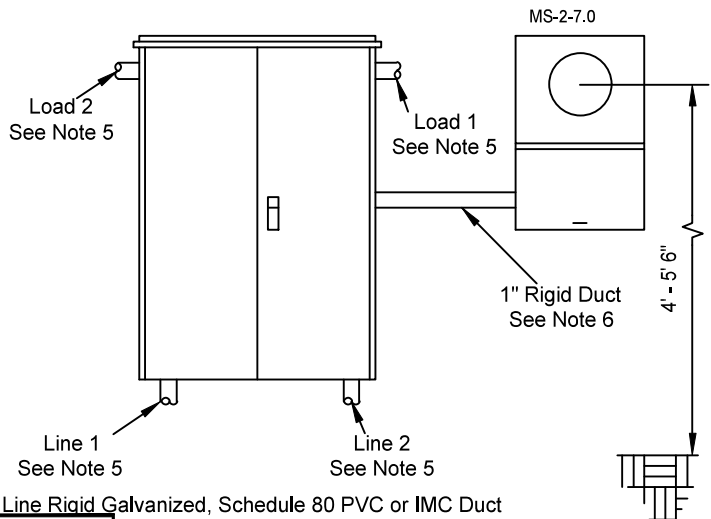


Table A

| Allowed # of Ducts | Maximum Conductors Size |
|----------------------------------|-------------------------|
| 2 | 750 kcmil |
| 3 | 500 kcmil |
| 4 | Not Allowed |
| Maximum Four Conductors Per Duct | |

NOTES

- (1) MS-2-7.0 Three-Phase Thirteen-Terminal Socket for CT Meter
- (2) MS-3-3.0 Recording Meter Instrument Transformer Enclosure
- (3) Line and load options shall be on opposite quarter section.
- (4) If the number of runs or duct size meets that allowed by table A, use MS-3-3.0 or MS-3-11.0 enclosure.
- (5) Use only one of the four load options.
- (6) Contractor shall install a 1" rigid duct between transformer enclosure and meter enclosure. This duct shall not exceed 30'. It shall be an unbroken run of conduit/wire containing no condulets.
- (7) All enclosures (drawings A and B) shall be securely mounted to building
- (8) Line and load options shall be on opposite quarter section.
- (9) 1-2-3 to be identified in RED, Neutral in WHITE. For Delta services the third (wild) leg in ORANGE.
Leave wire rolled up in CT can and ensure the wire is long enough to reach Main Disconnect Panel (MDP)

All conduits or nipples exiting a CT enclosure will be the same size and same number of conduits going out as the entrance conduits without exception.

Over 200A Three-Phase Underground Meter

MS-3-8.0