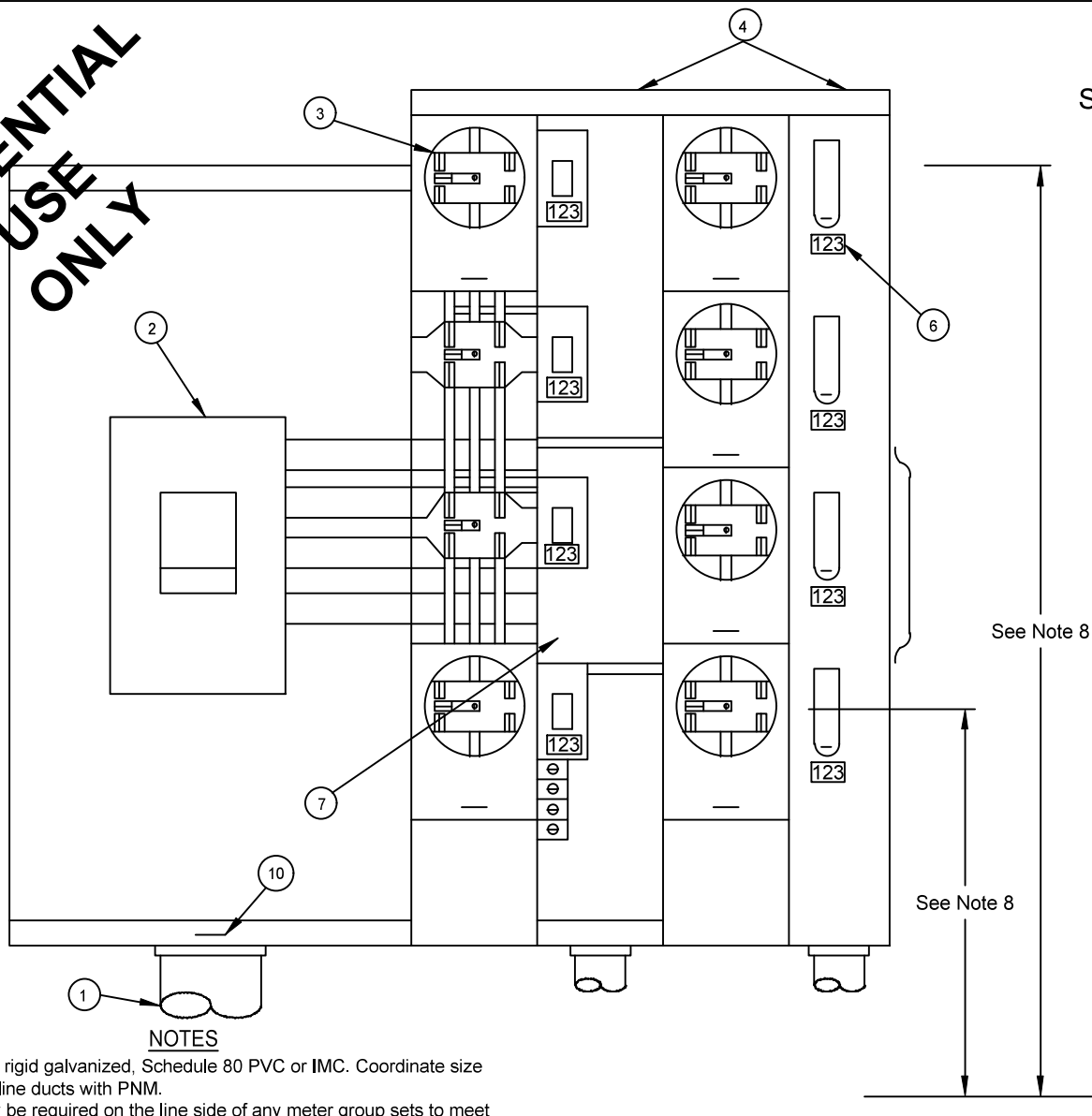


RESIDENTIAL USE ONLY

PNM METER STANDARD



NOTES

- (1) Line duct must be rigid galvanized, Schedule 80 PVC or IMC. Coordinate size and number of line ducts with PNM.
- (2) Main breaker may be required on the line side of any meter group sets to meet NEC, state or local codes.
- (3) New socket jaws installation must be minimum of 200A for gang meter sockets only. Fifth terminal to be in 9:00 o'clock position. For existing installations 125A is permitted.
- (4) Load conductors may exit either top or bottom of tenant breaker section. They shall not travel through or exit out of socket sections of modules.
- (5) Three-phase services will not be added to this gear after initial installation unless gear was designed and manufactured for that use and approved by PNM.
- (6) 1" placards to be used under main disconnect and adjacent to the corresponding socket on a non-removable part of the cabinet. No painted or written identification will be accepted.
- (7) Line bus feed must have metal barrier when passing through tenant breaker section for safety and security.
- (8) Top meter shall be a maximum of 79" from finished grade. Bottom meter shall be a minimum of 30" from finish grade. Maximum of four meters per column.
- (9) PNM requires a minimum clearance of 36" minimum between front of sockets and any wall or obstruction.
- (10) All line feed sections shall be lockable and sealable by PNM.
- (11) All units shall be complete with sockets and breakers at the time of initial set of first meter.
- (12) Guard posts will be required in traffic areas.
- (13) The three-phase house meter must be a seven-jaw with bypass handle. House meter must be tapped off from all phases and neutral of the line side meter pack main buss or disconnect.

REFERENCES

- (1) See DM-4-11.0 Maximum Available Fault Currents
- (2) See DS-7-16.10 Guard Post
- (3) See MS-2-1.0 Meter Socket Ring
- (4) See MS-2-6.0 120/208 Wye or 120/240 Delta 200A Three-Phase Four-Wire Wye or Delta Meter Socket with Bypass

Approved Equipment		
Manufacturer	Item	Mfg Part #
ABB	200A OH/UG Ringless # Position	RMS18***22LRLR
ABB	200A OH/UG Ringless # Position	RMS18***22HRLR
ABB	200A OH/UG Ringless # Position	RMS112***22LRLR
ABB	200A OH/UG Ringless # Position	RMS112***22HRLR
ABB	200A OH/UG Ringless # Position	RMS28***22LRLR
ABB	200A OH/UG Ringless # Position	RMS28***22HRLR
ABB	200A OH/UG Ringless # Position	RMS212***22LRLR
ABB	200A OH/UG Ringless # Position	RMS212***22HRLR
ABB	225A OH/UG Ringless # Position	RMS112***22CHLBR
ABB	225A OH/UG Ringless # Position	RMS212***22CHLBR
ABB	225A OH/UG Ringless # Position	RMS312***22CHLBR
AMP	200A OH/UG Ringless # Position	RMR*-M400L
AMP	200A OH/UG Ringless # Position	RM*-400L
Eaton	200A OH/UG Ringless # Position	1MM***
Eaton	200A OH/UG Ringless # Position	1MP***
Eaton	200A OH/UG Ringless # Position	3MM****
Eaton	200A OH/UG Ringless # Position	35MM****
Eaton	200A OH/UG Ringless # Position	37MM****
GE	200A OH/UG Ringless 4 Position	TMPR8420
GE	200A OH/UG Ringless # Position	TMPR12020
Landis & Gyr	200A OH/UG Ringless Bypass	HQ5
Siemens	200A OH/UG Ringless # Position	WMM****
Siemens	200A OH/UG Ringless # Position	WML*****
Square D	200A OH/UG Ringless # Position	MPR*****
Square D	200A OH/UG Ringless # Position	MPH*****

***There are various catalog # available for # positions.

Remove the first "W" if units are indoor

For ease of checking service without interruption, PNM will no longer allow ring meter sockets as of 12/01/2013.

120/208V Five-Terminal Modular Meter and Equipment

MS-4-2.0