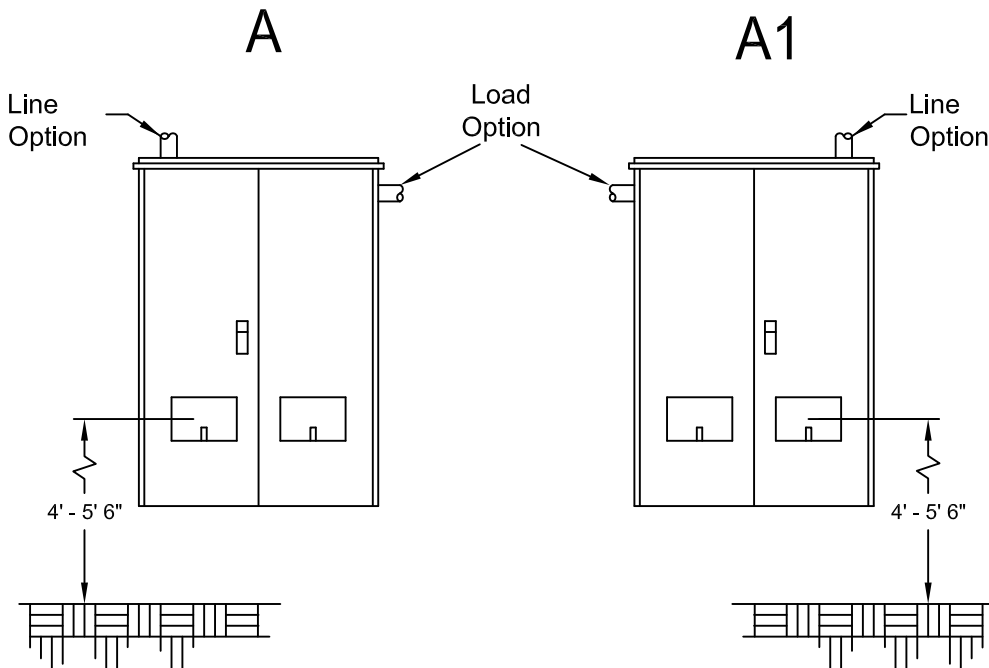


Overhead Option



Important:

Socket shall be wired phase 1-2-3 from left to right and the conductors marked as such. Each conductor phase will be identified at the weather head or padmount, and at the meter base using band-wraps of electrical tape:

- One band for phase one
- Two bands for phase two
- Three bands for phase three
- White tape is suitable for neutral conductors only.

NOTES

- (1) MS-3-2.0 Double-Window Three-Phase Instrument Transformer and Meter Enclosure
- (2) Must be used when main switch is larger than 200A.
- (3) Use only one of the options.
- (4) Must have 3/4" plywood backing inside enclosure.
- (5) If ducts or conductors cannot be kept out of shaded area due to parallel or large conductors. MS-3-8.0 drawings B must be used.
- (6) Maximum of two runs of 500 kcmil cable in a maximum of two ducts.
- (7) Line and load options shall be on different quarter section.
- (8) 1-2-3 to be identified in RED, Neutral in WHITE. For Delta services the third (wild) leg in ORANGE.  
Leave wire rolled up in CT can and ensure the wire is long enough to reach Main Disconnect Panel (MDP)

Table A

Allowed Number of Ducts	Maximum Conductors Size
1	750 kcmil Overhead ONLY
2	500 kcmil
3	Not Allowed
Maximum 4 Conductors Per Duct	

All conduits or nipples exiting a CT enclosure will be the same size and same number of conduits going out as the entrance conduits without exception.